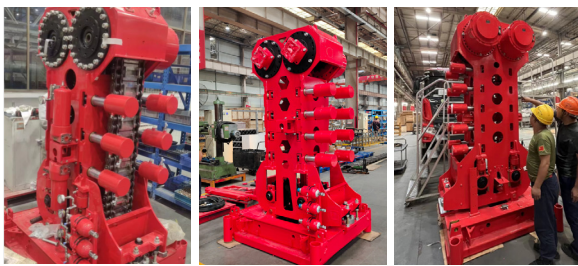


# Coiled Tubing Equipment



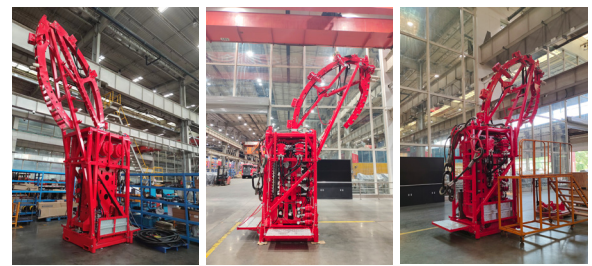
## Reliable Traction, Industry-Leading Strength

- The extended floating clamp on the injector offers 13% longer gripping area than competitors, with even force distribution and extended service life for demanding operations.



## Powerful Drive, Greater Lifting

- The injector integrates a high-torque motor and high-ratio gearbox, delivering 10% greater lifting force than others while ensuring industry-leading safety in harsh operations.



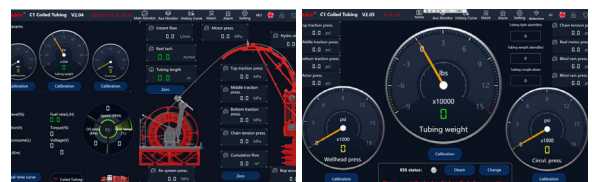
## Self-Developed Chassis, Superior Matching

- The industry-exclusive pipelaying chassis combines optimized powertrain synergy with reinforced off-road capability, engineered for extreme terrain reliability



## Intelligent Data Acquisition, Easy Maintenance

- Self-developed data acquisition system delivers robust analytics, intuitive controls, and predictive maintenance alerts for streamlined equipment management.



## Parameter sheet

Model	LGC270/LGT270/LGQ270	LGC360/LGT360/LGQ360	LGC450/LGT450/LGQ450	LGC630/LGT630/LGQ630
Typical Applications	Acidizing, sand washing, well cleanout, gas lift unloading, fishing, milling, logging			
Mounting Options	Truck-mounted / Semi-trailer / Skid-mounted			
Chassis	SANY SYM5460T3F / SINOTRUK ZZ5447V547GF1 / 4-axle trailer			
Injector Model	ZRT-60K	ZRT-80K	ZRT-100K	ZRT-140K
Continuous Pulling Force(lbs/kg)	60,000(27,000)	80,000(36,000)	100,000(45,000)	140,000(63,000)
Continuous Snubbing Force (lbs/kg)	30,000(13,500)	40,000(18,000)	50,000(22,500)	70,000(31,500)
Reel Capacity	1.75 "-4600m(15,000ft) 1.5"-6400m(21,000ft)	1.75" -5500 m(18,000ft) 1.5" -6700 m(22,000ft)	2"-6600 m(21,650ft) 1.75"-8400 m(27,500ft)	2.375"-6500 m(21,300ft) 2"-9000 m(29,500ft)
BOP Size (inch/mm)	3-1/16(77.8)	4-1/16(103)	4-1/16(103)	5-1/8/(130)
Applicable Tubing Size(inch)	1.25 ~ 1.75	1.5 ~ 2.375	1.75 ~ 2.875	2 ~ 2.875
Working Pressure(psi/Mpa)	10,000/15,000(70/105)			
Trailer Dimensions(mm)	15,500×2,550×4,400	16,300×2,550×4,500	16,500×2,550×4,500	18,500×3,200×4,500
Gross Trailer Weight(kg)	42,000	46,000	48,000	56,000

## Project Cases

